

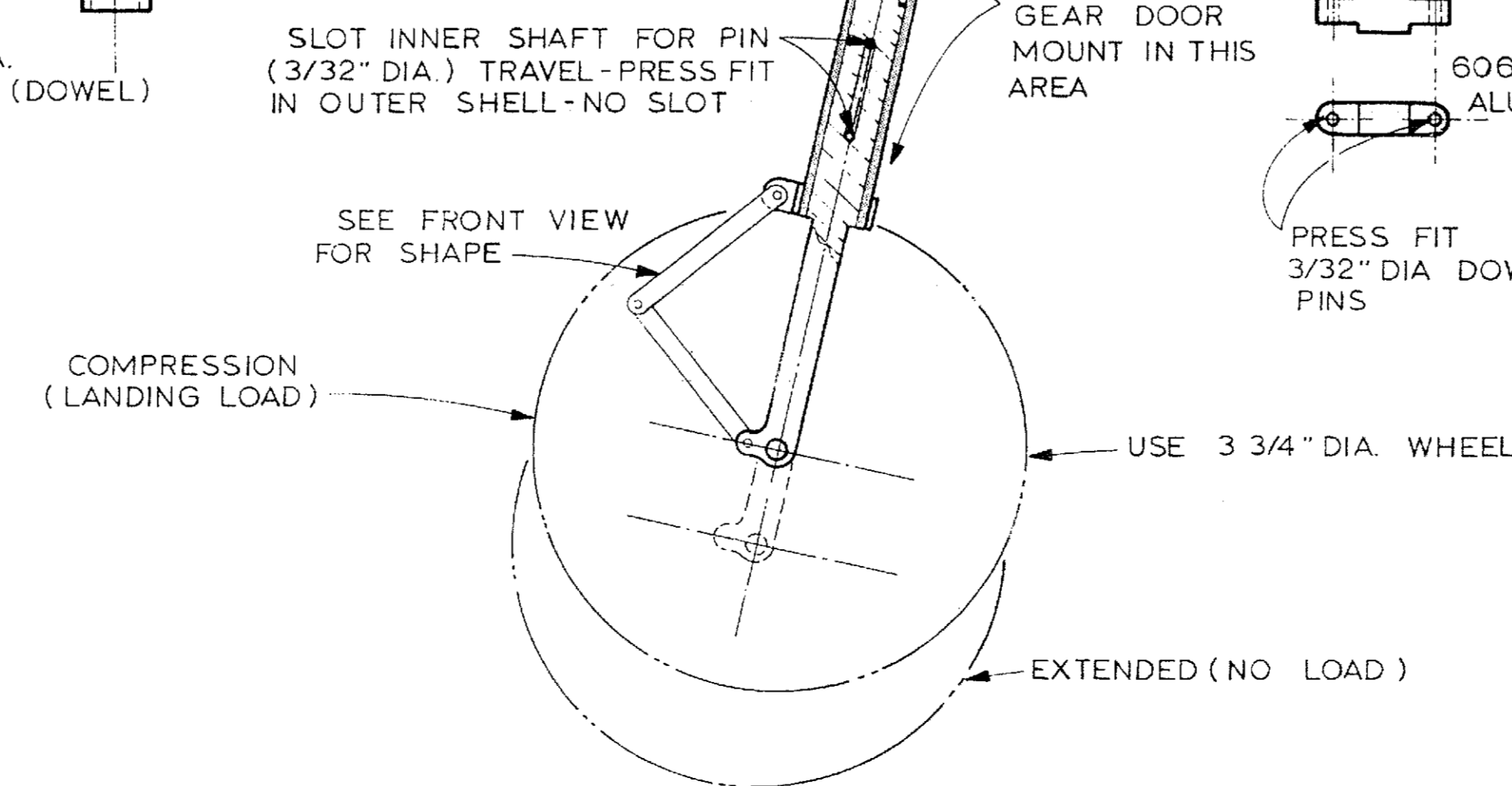
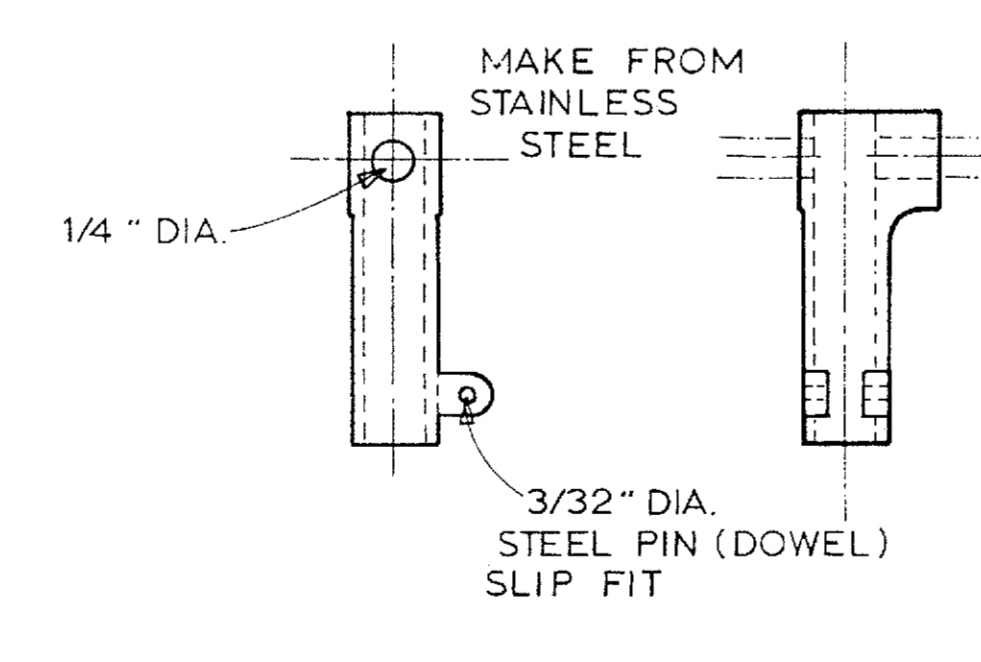
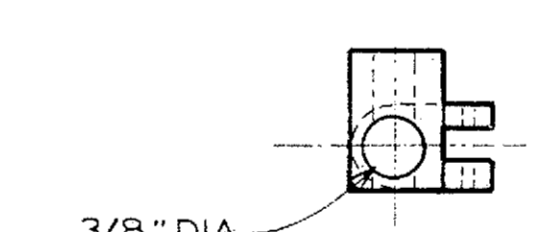
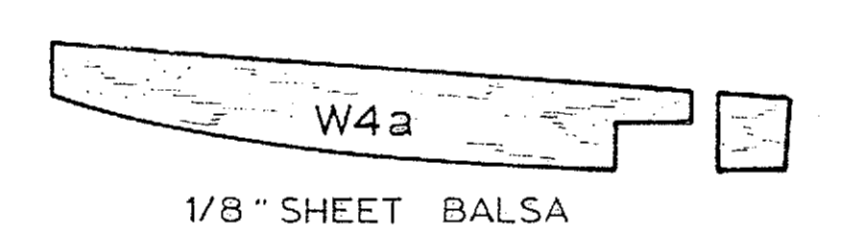
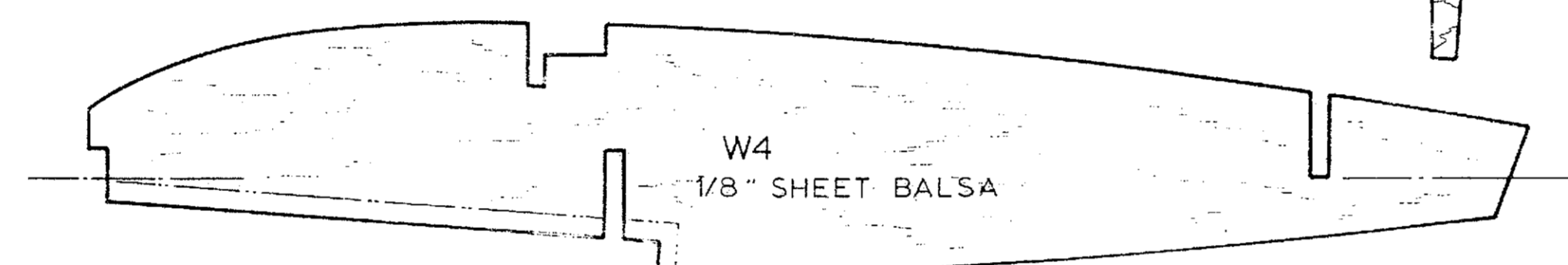
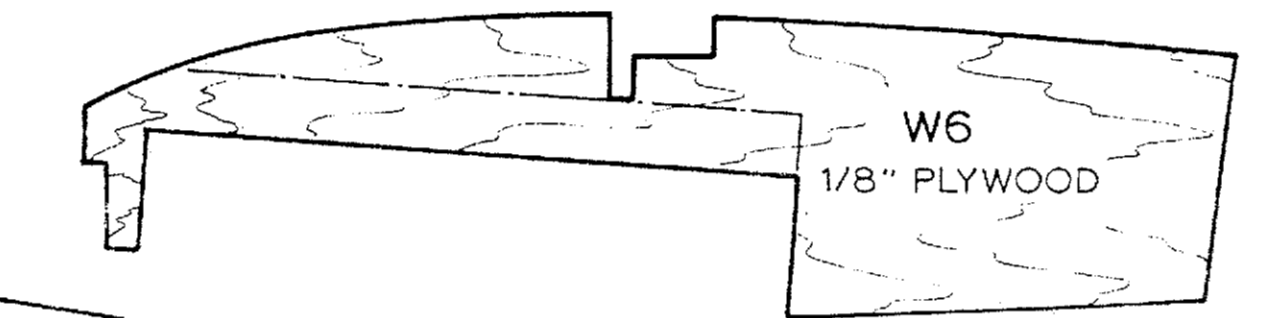
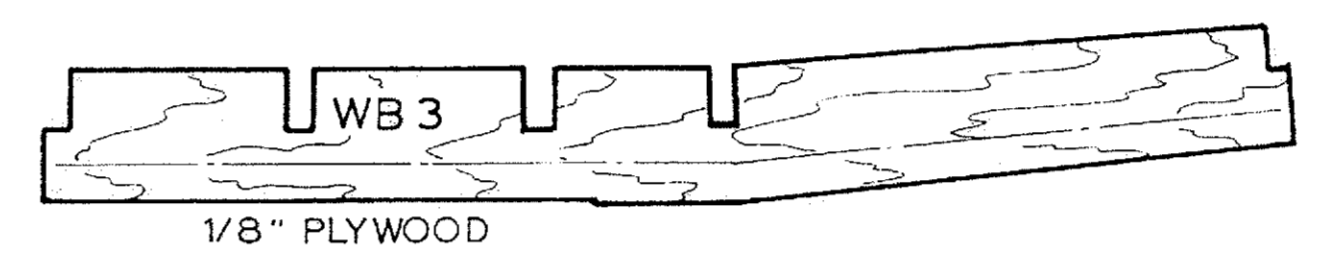
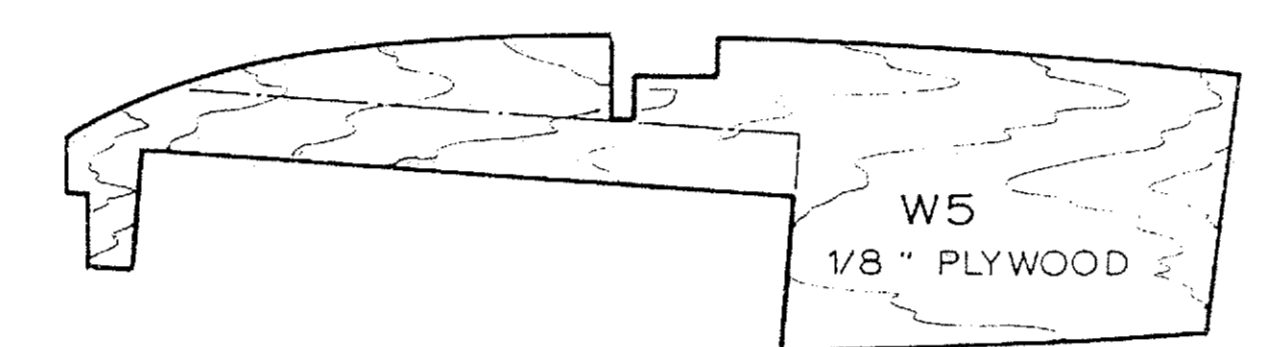
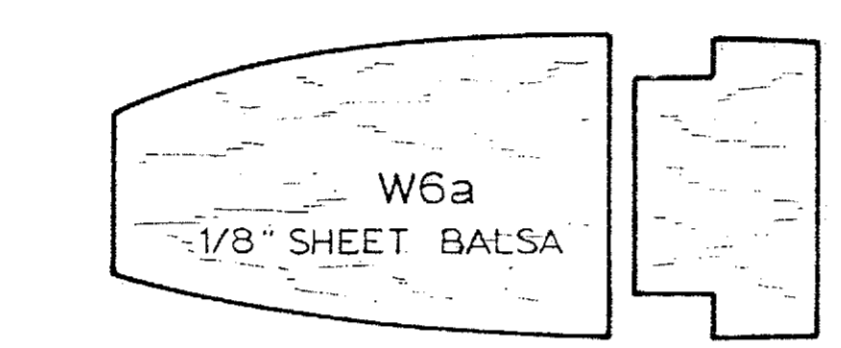
#### BUILT-UP COWL CONSTRUCTION

BEGIN WITH FORMERS C-2 AND THE TEMPORARY FORMER (MAKE FROM 1/8" SHEET Balsa). GLUE THE 5/8" SHEET Balsa TOP & BOTTOM IN PLACE - THEN ADD REMAINING 1/2" Balsa SIDES. BEVEL EDGES AS SHOWN (FORMER C2 & C3). ADD REMAINING 1/2" SHEET Balsa SIDES. AFTER DRY REMOVE TEMPORARY FORMER & ADD C1. CARVE & SAND OUTSIDE TO SHAPE. SHAPE INSIDE REAR OF COWL AS SHOWN - NOTE DIFFERENCE WHERE C3 MAKES CONTACT WITH COWL INSIDE WALL. GLUE C3 IN PLACE TO COMPLETE COWL.

#### SCALE RESEARCH SOURCES

1. AMERICAN AIRCRAFT MODELER SEPT 1969 - BASIC 3-VIEWS - NOT COMPLETELY ACCURATE
2. ARCO-AIRCAM AVIATION SERIES NO. 23 - EXCELLENT FOR COLOR & DETAIL
3. FLYING MARCH 1945 - PHOTOS FROM VARIOUS ANGLES
4. OUTSTANDING MILITARY AIRCRAFT OF WW2 - PHOTOS OF PRATT & WHITNEY ENGINE
5. UNITED STATES CAMOUFLAGE WW2 - COLOR CHIPS & REGULATIONS
6. MODEL AVIATION JUNE 1960 - MORE 3-VIEWS & COCKPIT PHOTOS
7. MARKING OF THE ACES PART 2 U.S. NAVY - MANY PHOTOS & DRAWINGS
8. SPORT FLYING VOL. 5 NO. 2 - COLOR PHOTOS FROM VARIOUS ANGLES & COCKPIT
9. REPORT NO. 624 NATIONAL ADVISORY COMMITTEE FOR AERONAUTICS - PLOTTING FOR ROOT & TIP RIB - NACA 23015.6 & NACA 23009 RESP
10. CARRIER FIGHTERS VOL. 2 - MANY PHOTOS & DRAWINGS

#### ALTERNATE BUILT-UP COWL CONSTRUCTION

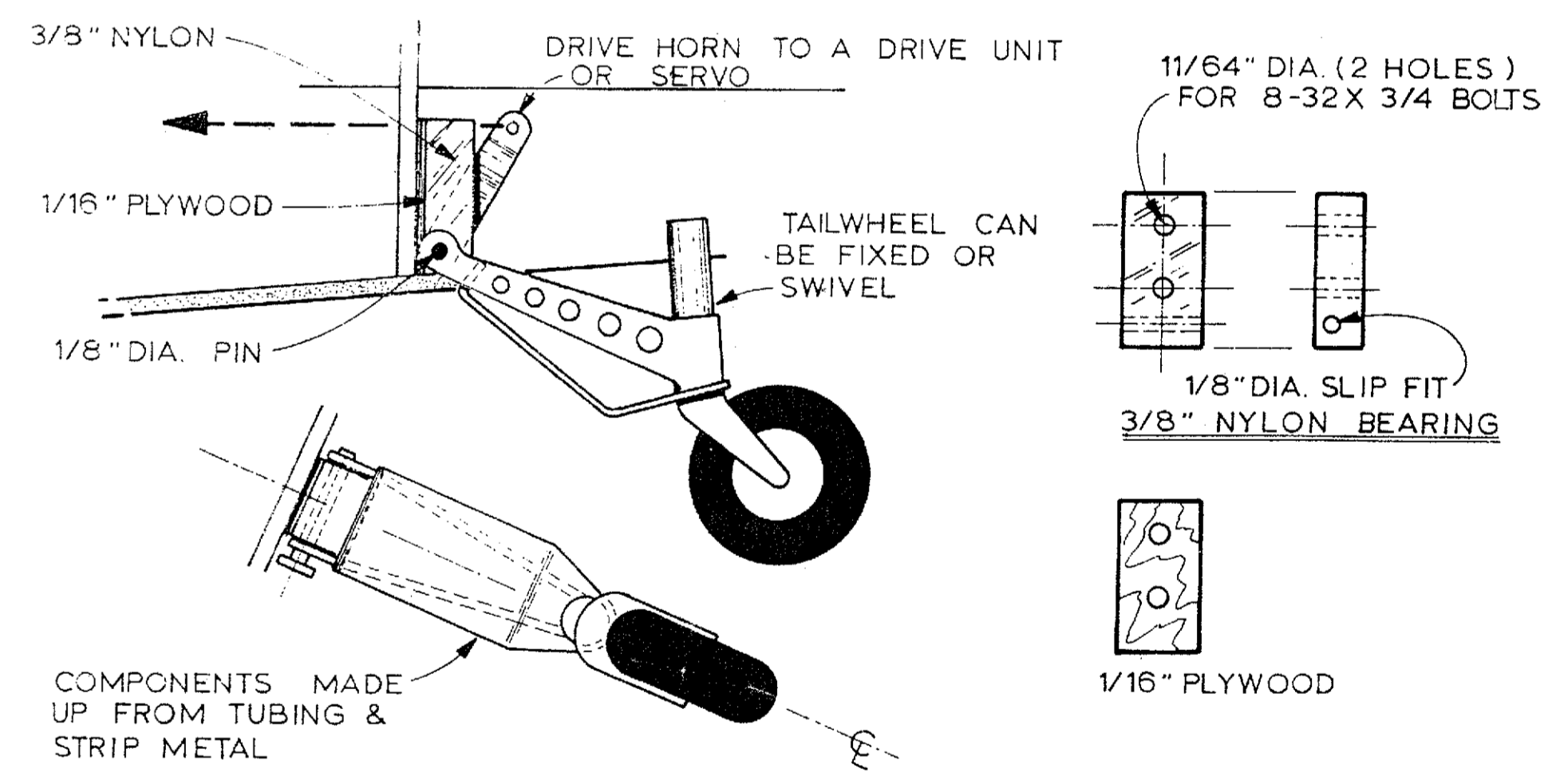
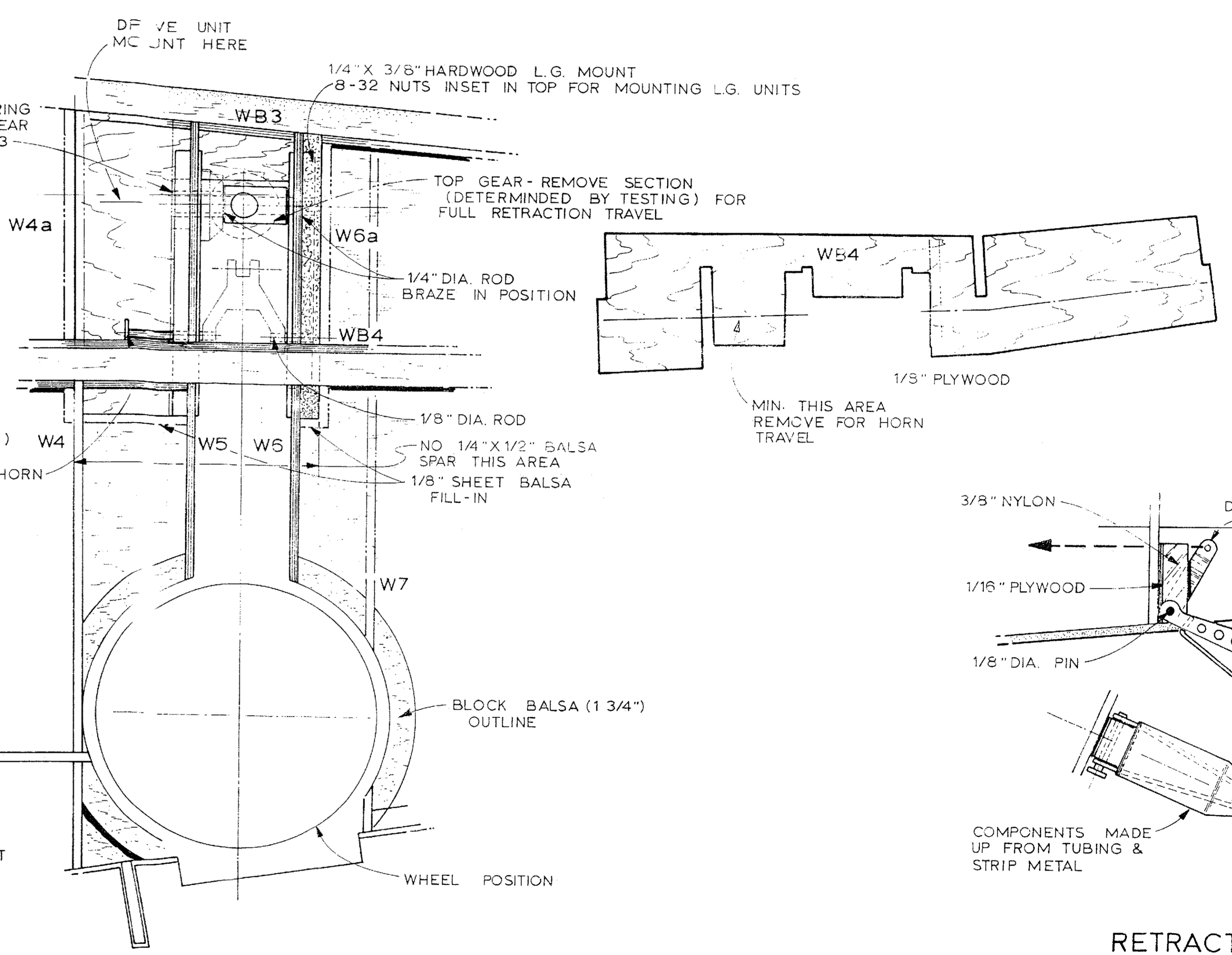


#### RETRACTS DESIGN NOTES

THESE UNITS SHOULD BE ATTEMPTED ONLY BY THE ADVANCED MODELER & EXPERIMENTER - ONE HAVING PREVIOUS EXPERIENCE WITH LATHE, MILLING MACHINES, & RETRACT UNITS. THIS UNIT REQUIRES KNOWLEDGE OF FIT & TOLERANCES FOR MACHINING. THE UNIT IS DESIGNED TO CONCENTRATE THE LOAD (LANDING FORCES) ON THE COMPRESSION SPRING, 1/4" DIA. SHAFT, & THE BEARING BLOCKS - NOT THE BEVEL GEARS. USE ONLY HI-STRENGTH ALUM OR STAINLESS STEEL FOR METAL COMPONENTS. A LIGHT MODEL IS VERY IMPORTANT, CAREFULL SELECTION OF Balsa IS A NO.1 FACTOR.

THESE UNITS CAN BE REMOVED IN PIECE FOR MAINTENANCE & TESTING. AFTER COMPLETION OF EACH UNIT, IT SHOULD BE BENCH TESTED (CYCLED) MANY TIMES TO CHECK FOR BINDING & SMOOTHNESS BEFORE INSTALLATION IN THE MODEL.

THIS IS A PROPOSED SYSTEM ONLY.



#### RETRACTABLE TAIL WHEEL

#### CUSTOM PLANS SERVICE

#### GRUMMAN F6F-3 or 5 "HELLCAT"

Scale: 1 1/2" = 1' 64 1/2" span

ROBERT C. SWEITZER  
2331 S.E. MAPLE  
HILLSBORO, OREGON 97123

SHEET  
4 of 4  
117 RC

ALL RIGHTS RESERVED